

# Double roller set / Speedometer for testing Taximeter and Tachometer

for TAXI, Rental cars, Van and light commercials

Typ: DRS 80 4x4 PC Nr. 22750 4



Picture: Installation at National metrological Institut Nürnberg /Germany

- Double roller set for testing cars, vans, and light commercial vehicles as Taxi and rentals
- Hydraulic moving system for axle distance with automatic adjustment of wheel base
- Mechanic system and cover plates fully hot galvanised
- Special balanced rollers
- Special motor drive for 4WD vehicles with speed synchronization for testing without running engine of the vehicle
- Lateral safety rollers, free adjustable
- Pneumatic lift bar with roller brake for easy drive in and drive out
- Light barrier for counting wheel rotations
- Roller sensor with high resolution
- User friendly software with database for tariffs for Taxi of local communities
- Special remote control for operation from driver's seat

## Description:

Special tester for calibration of taximeter and mileage counters in rental vehicles and Tachometer in metrological institutes and vehicle test stations. The robustly roller set allows testing all kind of Vehicles with high frequency and with high precision on all four wheels at same time.

This tester is specially designed for testing of vehicles with 4 wheel drive, hybrid drives and modern electric drives.

By turning of all wheels with synchron speed it is possible to test all kind of modern drive concepts as well vehicles with ABS, EBS, ASR or other traction control systems without error messages and trouble for the clients.

## Measuring functions:

- Taximeter test with tariff management for driven track and waiting time
- Odometer test with automatic test distance counting
- Tachometer test up and down with hysteresis check
- Check of wheel circumference
- Automatic speed reducing near the measuring points

## Measuring methods:

- Track and speed test with roller 100 Impulses per meter and automatic calculation with correction factor
- Alternatively by counting rotations with light barrier
- Combined operation with from track and rotations

## Functions for 4WD testing:

- Measuring available for both roller sets, front and rear
- Speed synchronization of front and rear axle
- Hydraulic movement of wheel base as pre setting of the data base
- Cover system moving for all axle distances

## Operation method:

- Preparation on desktop computer screen
- Measurement and Testing by radio remote control from driver seat



Large video display 23"



Parallel desktop display



Adjustable lateral rollers

# 4WD roller set for TAXI and rental cars

## Typ: DRS 80 4x4 PC Nr. 22750 4

### Scope of supply:

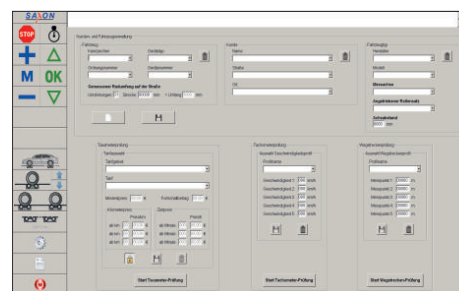
- 2 Roller set with motor drive
- Hydraulic moving unit with cover system
- Lift bar with roller brake
- Light barrier set
- Display unit for computer system with cupboard
- Computer system with Software for Windows 7 or 8
- Radio remote control set

### Technical data:

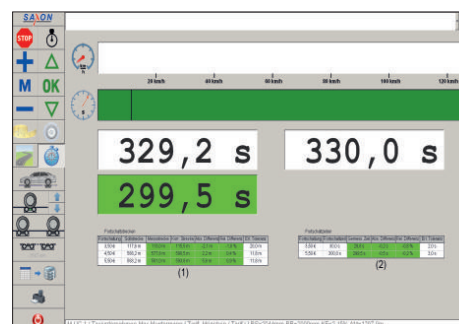
Maximum axle load	4000 kg
Test width minimum	800 mm
Test width maximum	2400 mm
Wheel base	2420 mm - 3670 mm
Roller circumference	1000 mm
Resolution	100 Imp./m
Measuring range	0 - 120 km/h
Measuring accuracy	± 0,6 % with Corr.
Temperature range	5 – 45°C
Power of motor drive	2x 11 kW
Speed range with motor drive	0 – 60 km/h
for axle load 0-2000 kg	0 – 120 km/h
Pneumatic lift bar capacity	max. 4 t
Air pressure supply (by client)	8 bar, ½" (12 mm)
Power supply (by client)	3 Ph. 400 V, 50 Hz
Fusing (by client)	3 x 63 A (slow)
Foundation (Width*Length*Deepness)	2620x4600x740mm
Space requirement (Width*Length)	2820x6070

### Options:

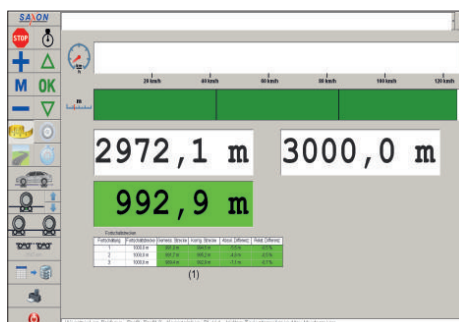
- Lateral safety rollers (2 set recommended)
- Parallel display with 22" TFT monitor
- Printer equipment
- EVP Interface for Germany (EVP 2010)



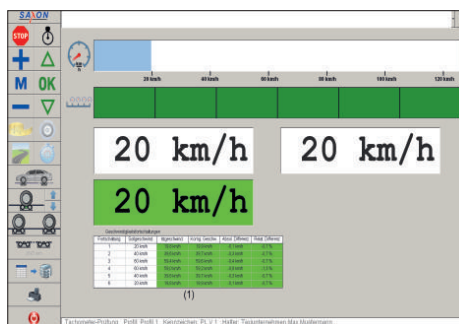
Screen with tarif management



Screen: Taximeter waiting time



Screen: Taximeter distance measurement



Screen: Tachometer test



Picture: Example installation 4x4 version in NMI in Passau, Germany



Radio remote control

### More information and advice is available:

SAXON Prüftechnik GmbH  
Am Stadtwald 19/23  
08525 Plauen  
Germany

www.saxon.de  
info@saxon.de  
Tel: +49 (0) 3741 5485 32

